

"The Bewitching Bow" Series  
for Staffordshire Music Service



# "Sing and Play Along"



instrumentalists join singers in the National Curriculum

**RECORDER AND VIOLIN**

Kerry Milan

# Water Come a Me Eye

Two staves of musical notation in G major (one sharp) and 4/4 time. The first staff contains the first line of music, and the second staff contains the second line. The melody is simple and folk-like, consisting of eighth and quarter notes.

For the Chorus of The Keeper, one group may play the notes with the tails going up, the other group those with the tails going down.

## The Keeper

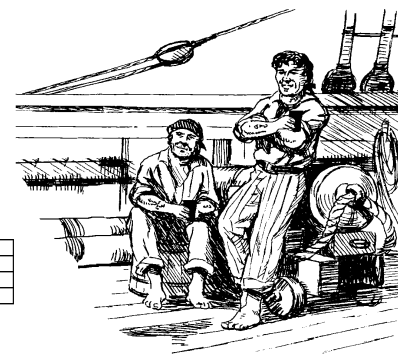
Four staves of musical notation in G major (one sharp) and 4/4 time. The first staff is the beginning of the piece. The second staff is labeled 'Chorus' and features a rhythmic pattern of eighth notes. The third and fourth staves continue the melody with various note values and rests.

## Lewis Bridal Song



Three staves of musical notation in G major (one sharp) and 4/4 time. The first staff is labeled 'Chorus' and shows a rhythmic pattern of eighth notes. The second staff is labeled 'Fine Verse' and contains a melodic line. The third staff is labeled 'D.C.' and continues the melodic line.

## Turn the Glasses Over



Musical notation for "Turn the Glasses Over" in G major (one sharp) and 4/4 time. It consists of three staves of music.

## The Riddle Song: I Gave my Love a Cherry

Musical notation for "The Riddle Song: I Gave my Love a Cherry" in G major (one sharp) and 4/4 time. It consists of two staves of music.

## Zum Gali Gali

Musical notation for "Zum Gali Gali" in G major (one sharp) and 4/4 time. It consists of three staves of music. The third staff is labeled "Chorus" and ends with a double bar line and repeat sign.

The chorus of Zum Gali Gali can be played as an introduction and then throughout the piece as a second part.

# Coulter's Candy

Two staves of musical notation for 'Coulter's Candy'. The key signature is one sharp (F#) and the time signature is 4/4. The first staff contains the first two measures, and the second staff contains the next two measures. The melody consists of quarter and eighth notes.

# The British Grenadiers

Three staves of musical notation for 'The British Grenadiers'. The key signature is one sharp (F#) and the time signature is 4/4. The first staff contains the first two measures, the second staff contains the next two measures, and the third staff contains the final two measures. The melody features a mix of quarter, eighth, and sixteenth notes.

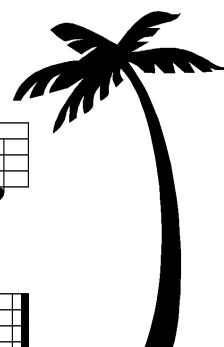
# Mango Walk

Chorus

Two staves of musical notation for the 'Chorus' of 'Mango Walk'. The key signature is one sharp (F#) and the time signature is 4/4. The first staff contains the first two measures, and the second staff contains the next two measures. The melody is characterized by a steady eighth-note rhythm.

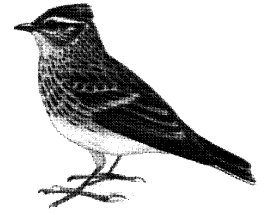
Verse

Two staves of musical notation for the 'Verse' of 'Mango Walk'. The key signature is one sharp (F#) and the time signature is 4/4. The first staff contains the first two measures, and the second staff contains the next two measures. The melody is similar to the chorus but with a different rhythmic pattern.



Mango Walk may be performed in two parts, one starting with the chorus, the other at line three with the verse.

# Alouette (the Lark)



Musical score for 'Alouette (the Lark)' in G major, 4/4 time. It consists of three staves of music. The first staff begins with a treble clef, a key signature of one sharp (F#), and a 4/4 time signature. The melody is characterized by eighth and sixteenth notes, often beamed together in groups. The second and third staves continue the piece with similar rhythmic patterns and some rests.

# Land of the Silver Birch

Musical score for 'Land of the Silver Birch' in G major, 4/4 time. It consists of three staves of music. The first staff starts with a treble clef, a key signature of one sharp (F#), and a 4/4 time signature. The melody is composed of eighth and quarter notes. The second staff continues the melody with some rests. The third staff features a more rhythmic pattern with eighth notes and rests.

# Amazing Grace

Musical score for 'Amazing Grace' in B-flat major, 3/4 time. It consists of three staves of music. The first staff begins with a treble clef, a key signature of two flats (Bb and Eb), and a 3/4 time signature. The melody features a prominent triplet of eighth notes. The second and third staves continue the piece, with the third staff also featuring triplet markings over eighth notes.

# My Grandfather's Clock

Musical score for 'My Grandfather's Clock' in G major, 4/4 time. The score consists of four staves. The first staff begins with a treble clef, a key signature of one sharp (F#), and a 4/4 time signature. It features a repeat sign with first and second endings. The second staff continues the melody. The third staff includes a triplet of eighth notes. The fourth staff concludes the piece with a final triplet of eighth notes.



## Ye Banks and Braes

A Traditional Scottish Tune

Musical score for 'Ye Banks and Braes' in G major, 6/8 time. The score consists of three staves. The first staff starts with a treble clef, a key signature of one sharp (F#), and a 6/8 time signature, followed by a repeat sign. The second staff includes first and second endings, with the word 'Fine' written above the final measure. The third staff continues the melody and ends with the instruction 'D.S. al Fine'.

## The Ash Grove

A Traditional Welsh Tune

Musical score for 'The Ash Grove' in G major, 3/4 time. The score consists of three staves. The first staff starts with a treble clef, a key signature of one sharp (F#), and a 3/4 time signature, followed by a repeat sign. The second staff includes first and second endings, with the word 'Fine' written above the final measure. The third staff continues the melody and ends with the instruction 'D.S. al Fine'.

# The Cuckoo

An Austrian folk-song **page 7**

Musical notation for 'The Cuckoo' in G major (one sharp) and 3/4 time. It consists of three staves. The first two staves are single-line treble clef notation. The third staff is a double-line treble clef notation, indicating a three-part round, with first and second endings marked '1' and '2'.

- a good three-part round

# Baby Sardine

Music by P. Wooding / J. Wild

Musical notation for 'Baby Sardine' in G major (one sharp) and 6/8 time. It consists of three staves labeled A, B, and C, representing the three parts of a round. Each staff is a single-line treble clef notation.

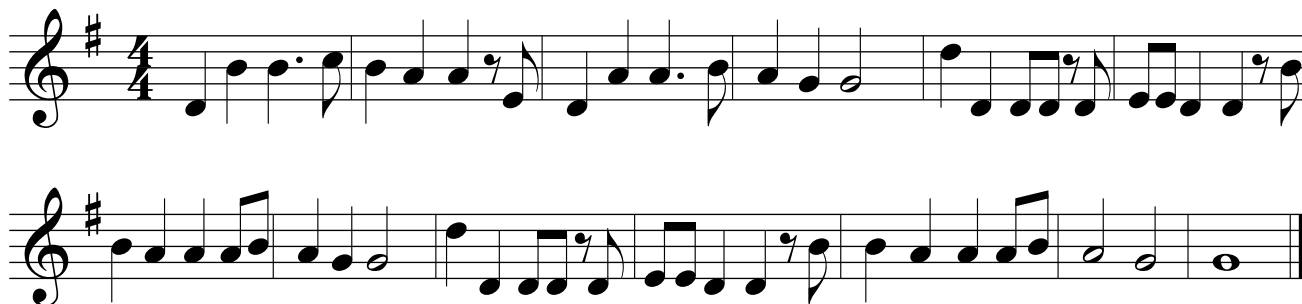
# What Shall We Do with the Drunken Sailor?



Musical notation for 'What Shall We Do with the Drunken Sailor?' in G major (one sharp) and 2/4 time. It consists of four staves of single-line treble clef notation.

# My Aunt Jane

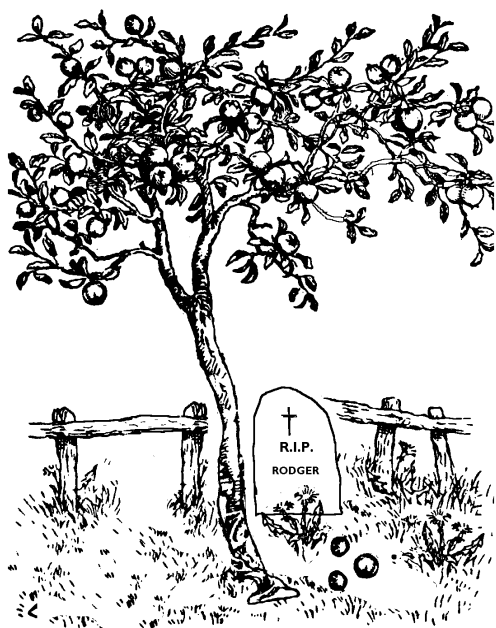
- A Traditional Irish Tune



# All Night, All Day



# Old Rodger is Dead





# Soldier, Soldier, Won't You Marry Me?

page 9



Musical notation for the song "Soldier, Soldier, Won't You Marry Me?". It consists of four staves of music in a single system, all in treble clef and one flat (B-flat major or D minor). The first staff ends with a double bar line and a fermata. The second staff is marked "Fine" and also ends with a double bar line and a fermata. The third staff ends with a double bar line and a fermata. The fourth staff is marked "D.C. al Fine" and ends with a double bar line and a fermata.

# Andulko (Little Angel)

A Czech folk-song

Musical notation for the song "Andulko (Little Angel)". It consists of three staves of music in a single system, all in treble clef and 3/4 time. The first staff ends with a double bar line and repeat dots. The second and third staves continue the melody.

# Paul's Little Hen

A Scandinavian folk-song

Musical notation for the song "Paul's Little Hen". It consists of three staves of music in a single system, all in treble clef and 2/4 time. The first staff ends with a double bar line and repeat dots. The second and third staves continue the melody.

# The Soldier's Song - Schumann

R. Schumann

Musical score for 'The Soldier's Song' by Robert Schumann. The score consists of four staves of music in 4/4 time. The melody is written in treble clef with a key signature of one sharp (F#). The music features a mix of eighth and sixteenth notes, with some rests and a final cadence.

# Silent Worship

G. F. Handel

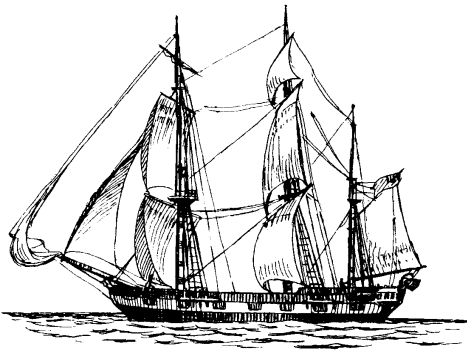
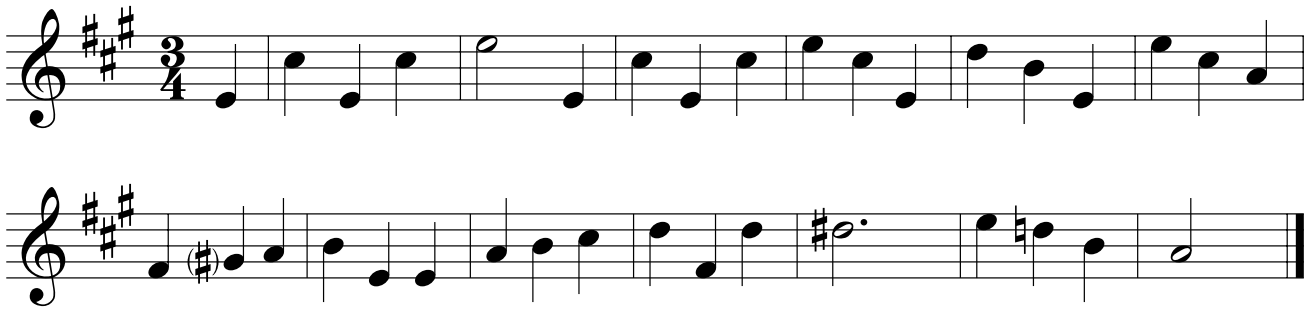
Musical score for 'Silent Worship' by George Frideric Handel. The score consists of four staves of music in 4/4 time. The melody is written in treble clef with a key signature of one sharp (F#). The music features a mix of eighth and sixteenth notes, with some rests and a final cadence. The word 'Fine' is written above the third staff, and 'D.C. al Fine' is written below the fourth staff.



# The Blacksmith - Brahms

page 11

J. Brahms



## Blow the Wind Southerly

1 2

## Acknowledgements

The words of *ANDULKO THE GOOSE GIRL* by Kerry Milan with acknowledgements to Roger Fiske.

The words of *BABY SARDINE* by Kerry Milan with acknowledgements to Spike Milligan.

The music for *BABY SARDINE* by P. Wooding and J. Wild: © Sing for Pleasure, 25 Fryerning Lane, Ingatestone, Essex. CM4 0DD

The percussion / piano accompaniments are by Kerry Milan, except Handel's "Silent Worship" and Schumann's "The Soldier's Song". The accompaniment to Brahms' "The Blacksmith" is a simplified arrangement of the original piano part. (A still easier version appears in the Oxford School Music Books.)

If other people's copyright has inadvertently been infringed credit will be given in any further publication.

# Contents

2	Water Come a Me Eye
2	Lewis Bridal Song
2	The Keeper
3	The Riddle Song: I Gave my Love a Cherry
3	Zum Gali Gali
3	Turn the Glasses Over
4	Coulter's Candy
4	The British Grenadiers
4	Mango Walk
5	Alouette (the Lark)
5	Land of the Silver Birch
5	Amazing Grace
6	My Grandfather's Clock
6	Ye Banks and Braes
6	The Ash Grove
7	The Cuckoo
7	Baby Sardine
7	What Shall We Do with the Drunken Sailor?
8	My Aunt Jane
8	All Night, All Day
8	Old Rodger is Dead
9	Soldier, Soldier, Won't You Marry Me?
9	Andulko (Little Angel)
9	Paul's Little Hen
10	The Soldier's Song - Schumann
10	Silent Worship
11	The Blacksmith - Brahms
11	Blow the Wind Southerly
11	Acknowledgements